

SPRING NEWSLETTER 2020
ISSUE FIVE



◀ H O R I Z O N ▶

A LANDMARK DEVELOPMENT AT AN
EXCEPTIONAL WATERFRONT DESTINATION



T O A L L P U R C H A S E R S

A message from Jersey Development Company and Groupe Legendre

We hope this newsletter finds you and your family well, and you are all coping in these challenging times.

We wanted to keep you updated with everything that is happening at Horizon. As you will be aware, construction sites across the island have had to close.

The Horizon site closed on Monday 23rd March on health and safety grounds due to the COVID-19 pandemic. Both JDC and Groupe Legendre own the development on an equal basis and have already put substantial sums of money into the development. We all remain fully committed to completing the construction as expediently as we are able to once the site re-opens.

Whilst the site is closed, this doesn't mean that we are! The Horizon team are continuing to work normal office hours from home, and are fully equipped to host online meetings or apartment walkthroughs remotely, so if there are any matters you'd like to discuss, please get in contact with us. It's business as usual for us, just from home.

JDC and Groupe Legendre have staff working from home developing the designs for Horizon and we continue to tender various packages such as the façade and electrical works ready for when the site is operational again.

Whilst JDC is well known to islanders as being the Jersey Government's commercial development arm, and committed to continuing to develop out the Waterfront, you may not know so much about our building partners, Groupe Legendre are the tenth largest building contractor in France with a turnover of over €900m in 2018. Groupe Legendre not only has operations in France but also the UK, Portugal as well as here in Jersey.

Like you, we are looking forward to a time when the restrictions in place due to COVID-19 are lifted, and we can continue construction work. When this occurs, we will be able to provide you with a revised Target and Backstop Date for your block. We will keep you informed as and when there is a further update.

All of us here at Jersey Development Company and Groupe Legendre would like to take this opportunity to wish all our purchasers a peaceful and safe Easter. We wish you and your family well during these difficult times.

Jersey Development Company and Groupe Legendre



Whether you're downsizing or securing your dream home for the future, Horizon is designed to make your lifestyle easy. From sophisticated lobbies individually designed to reflect the marina setting to a choice of destination restaurants and cafés all on your doorstep - discover a new level of luxury waterside living.





W H Y R E N T W H E N Y O U C A N B U Y

If you've always dreamed of owning your own home, you could find that being on the property ladder is more affordable than you think.

TWO BED APARTMENT / 1 Bathroom – No parking			5 Year Fixed 2.10%
PRICE:	£395,000	▶ Per month over 30 Years	£1,333.52
Borrowing 90%:	£355,500	▶ Per month over 35 Years	£1,197.38

TWO BED APARTMENT / 1 Bathroom – No parking			5 Year Fixed 2.10%
PRICE:	£410,000	▶ Per month over 30 Years	£1,384.16
Borrowing 90%:	£369,000	▶ Per month over 35 Years	£1,242.85

TWO BED APARTMENT / 2 Bathrooms – 1 parking space			5 Year Fixed 2.10%
PRICE:	£500,000	▶ Per month over 30 Years	£1,688.00
Borrowing 90%:	£450,000	▶ Per month over 35 Years	£1,515.67

TWO BED APARTMENT / 2 Bathrooms – 1 parking space			5 Year Fixed 2.10%
PRICE:	£525,000	▶ Per month over 30 Years	£1,772.39
Borrowing 90%:	£472,500	▶ Per month over 35 Years	£1,591.45

If you're a local first time buyer, you could secure your home within the stylish Horizon development with an initial £2,000 reservation fee - the balance of the 10% deposit can be paid in monthly instalments over the build program, so you can reserve your apartment while renting or living at home.*



For more information about associated purchase costs and a more detailed look at what you can borrow, contact
info@mortgageshop.je | +44 (0) 1534 789830 | www.mortgageshop.je

Interest rate correct at date of printing - April 2020. Rates and lending criteria are subject to change. *Subject to criteria
Your home is at risk if you do not keep up repayments on a mortgage or any loans secured on it. The Mortgage Shop Ltd is registered with the Jersey Financial Services Commission.

1 BEDROOM
APARTMENTS

01
REMAINING

2 BEDROOM
APARTMENTS

39
REMAINING

3 BEDROOM
APARTMENTS

02
REMAINING

3 BEDROOM DUPLEX
APARTMENTS

06
REMAINING

W E L C O M E T O T H E S U P E R I O R C O L L E C T I O N

Raising the bar for luxury contemporary living at an exceptional waterfront destination



Here at Horizon, we are delighted with the response to our recent launch of the Superior Collection, a luxury collection of two and three-bedroom apartments and three-bedroom duplex penthouses at this prime waterfront location.

From downsizers to professionals searching for modern and hassle-free contemporary living, these exceptional homes provide a superb way to maximise on the lifestyle benefits of this stunning waterside location.

As our new Horizon community grows, it's good news for the many businesses who have already expressed an interest in being an active part of our new Waterfront neighbourhood. We look forward to welcoming more future residents to Horizon's destination address.

CP INTERIORS TOGETHER WITH HORIZON

Add your own style and character to your Horizon home with preferential rates and early installation once you have completed, with window dressings from CP Interiors.



Discover the vast range of window dressings available to Horizon purchasers. Take advantage of a free design consultation with CP Interiors. With options for all budgets from simple solutions to luxury options for window dressings and blinds, both manual and electric are available. Select your window coverings before you complete, then CP Interiors will have your window dressings ready to be installed post completion. Offering convenience and choice as you move in to your new home.

The show room is closed due to COVID-19 restrictions. CP Interiors are in full operation via email or telephone for all your interior needs.



ADVANTAGES OF WINDOW DRESSINGS

- + ADDING STYLE AND RETAINING YOUR VIEW
- + PRIVACY
- + TEMPERATURE AND GLARE CONTROL
- + LIGHT CONTROL
- + ENERGY SAVING

WHY CHOOSE CP INTERIORS?

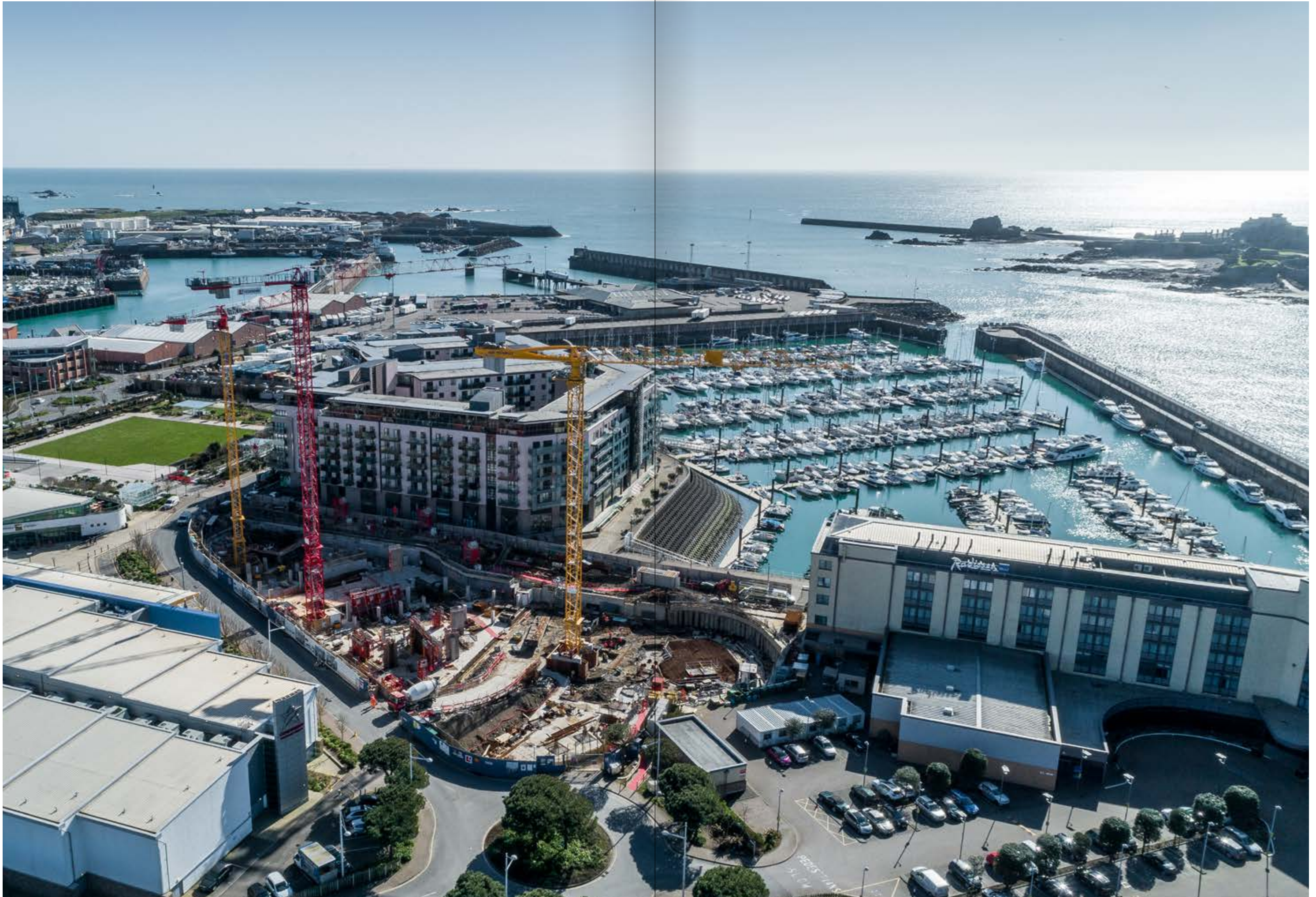
- + PREFERENTIAL RATES FOR HORIZON PURCHASERS
- + EARLY INSTALLATION - POST COMPLETION
- + UNBEATABLE PRICE PROMISE
- + A VAST RANGE OF WINDOW DRESSINGS
- + INTEREST-FREE CREDIT AVAILABLE



With CP Interiors, you can benefit from a free consultation on which window dressings will be best for your apartment, as well as advice on furniture, wallpaper, rugs, mirrors and more.

info@cpinteriors.je | +44 (0) 1534 768141

W W W . C P I N T E R I O R S . J E



V I E W Y O U R K I T C H E N C O L O U R C H O I C E S

*Choose your kitchen colour options from the comfort of your own home,
the kitchen section of the App is now live!*



Are you ready to start visualising how your new home at Horizon will look? With the new kitchen section now live on the app, you'll be able to review and decide on your preferred kitchen colour options from the comfort of your own home! It's easy to access, just launch the App as normal and select Kitchens. Search JDC Jersey in the App Store to find and download the App.

As a Horizon purchaser, you'll be receiving an email to confirm your kitchen colour choice meeting.
The timetable for meetings is below:

Horizon South - Appointments commence on July 13th - cut-off date is the 31st August 2020

Horizon West - Appointments commence September 21st - cut-off date 30th November 2020



Don't have an iPad? Use this link below to access.

https://homeviews.co.uk/sites/jersey/horizon_options_web/index.htm

BENEFITING OUR RESIDENTS, BENEFITING THE PLANET

We're delighted to be giving Horizon residents the benefit of convenient and easy access to EVie, the brand new on-demand electric transport service launched in Jersey earlier this year. As part of the Horizon development, Jersey Development Company is working alongside EVie to include EVie car parking spaces within the waterfront underground car park.



This means that as a Horizon resident, you'll have access to on-demand electric transport, a few minutes' from your door. With EVie cars and bikes available to hire for short journeys, getting around the island will be simple and sustainable for anyone who lives at Horizon. Whether you need the convenience of an electric car to pick up friends, or just want to explore the island with the ease and efficiency of an electric bike, it's all possible.

Read on for more information about the EVie scheme, or visit www.evie.je to register for an account and find out more.

EVIE CARS

About EVie Cars: EVie provides an all-electric Car Sharing Club (think ZipCar) consisting of a mixed fleet of BMW i3s and Nissan Leafs and vans which are available from on-street pickup locations in central St Helier. EVie expects to have 20 electric vehicles available by the end of 2020 and 40 by the end of 2021.

How to get started: Simply download the EVie App from the Apple App Store or Google Play by following the links on www.evie.je and register your details. Membership is reviewed and approved within a few hours. You're now ready to book any available car from a location near you.

How to use EVie: You can rent an EVie car by the hour. Cars can be reserved well in advance allowing you to plan your journey to suit your needs. There are no keys to pick up or drop off and no paperwork to fill in. You're fully insured for your hire, and the EVie team make sure the all-electric car has sufficient charge before you pick it up to get you round the island. You use the app to unlock a vehicle at the start of the journey and to lock it on return.

Why EVie? EVie allows you to pick up a car from town, somewhere near you, rather than have to go to the airport and, because they can be hired by the hour rather than the day, often work out cheaper. Happy driving!

EVIE BIKES

Launched in March 2020, EVie also provides an all-electric Dockless Bike Scheme (think Jump or Lime), with 140 state-of-the-art electric bikes. Users download the EVie Freebike App from links on the www.EVie.je website and register for an account.

The app shows the location of all EVieBikes available for hire. Once you have completed the download, follow the on-screen process to register your account and you'll be ready to tap and go!

To get started, simply:

1. Collect your EVieBike from one of the available locations on the map. This will either be from one of the bike racks around town or you will see this as an icon on the map.
2. From within the app, scan the QR code on the bike frame (located on the top of the battery case under the saddle) and press 'Rent Bike'.
3. Squeeze either brake lever twice to get going.
4. To 'Pause' a rental but still 'keep' the bike on hire by you (maybe while you get a coffee, mid-ride), simply press 'Pause Rental' within the app.
5. When you're done, just drop the bike back to any of the locations on the map, open the app and click 'End Rental', and then squeeze the brake lever twice as instructed by the app.



Artist's impression

H O R I Z O N D I A R I E S M A K I N G O U R T V A D V E R T

We go behind the scenes to show you how we made our latest TV advert.



Ever wondered what goes into filming a TV advert? For our latest Channel Television commercial, filmed by the creative team at The Observatory and starring locals, we imagined what a 'day in the life' could look like at Horizon.

From a post-work run on the beach to watching the sun set over the bay, Horizon's waterside location offers all the benefits of coastal living. Stroll along the beach to a waterside restaurant, or enjoy catching up with friends overlooking the marina, Horizon offers something for everyone.

Filmed over several days in and around the waterfront, the marina and St Aubin's Bay, watch our finished TV advert here, or check out our behind the scenes capture to see what things looked like from the other side of the lens!

Watch our TV advert
<https://vimeo.com/393403850>



Starring:

Will
Robbie
Ben
Patch
Olly
Rachael
Abi
Tim
Martine

· H O R I Z O N ·

While measures to prevent the spread of COVID-19 are in place, you can still explore the Horizon development from the comfort of home. Just download the JDC App from the App Store (search JDC) and you can check in on the latest imagery and availability.

If you'd like to speak to any of our team, we are available for Zoom conferencing calls or online meetings at a time to suit you. Just make an appointment by calling us on 01534 721097 or emailing info@horizon.je.

Monday & Friday - 10AM - 4PM
Tuesday & Thursday - 10AM - 5PM
Saturday - 10AM - 1PM

01534 721097 | info@horizon.je

WWW.HORIZON.JE